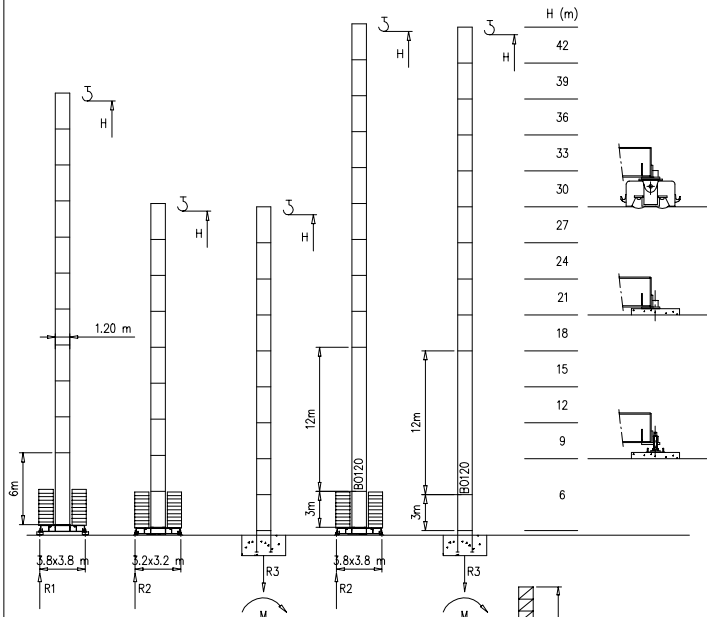


- S1210 - 1.21x1.21 m
- S1700 - 1.70x1.70 m

Torre/Reazioni - Masts/Reactions - Mat/Réactions - Masto/Eckdrücke - Mástil/Reacciones - Tramo/Reacções

S1210

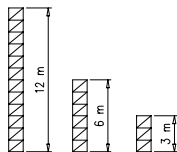
39.6 m → 50 m



H=37-42 m	
R1	55 t
R2	69 t
R3	44 t
M	185 tm

H=24-36 m	
R1	55 t
R2	55 t
R3	37 t
M	116 tm

H=0-23 m	
R1	45 t
R2	43 t
R3	39 t
M	101 tm

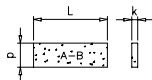


Peso zavorra - Ballast weight - Poids du lest - Ballastgewicht - Peso de lastre



3.8x3.8	H	n°	Tot.
	0-23 m	18 B	54000 kg
	24-36 m	20 B	60000 kg
	37-42 m	24 B	72000 kg

	A	B
L	3.6m	4.0m
k	0.3m	0.19m
d	1.15m	1.2m

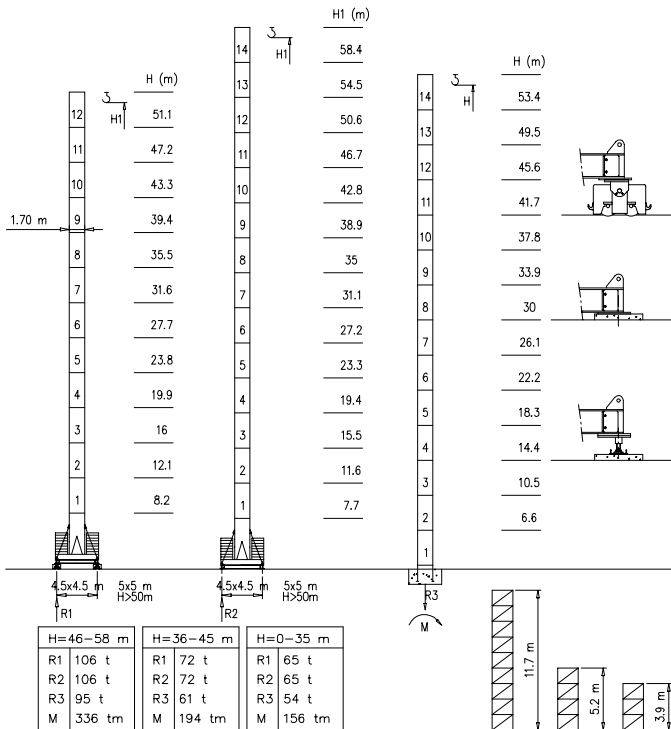


3.2x3.2	H	n°	Tot.
	0-27 m	18 A	54000 kg

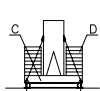
Torre/Reazioni - Masts/Reactions - Mat/Réactions - Maste/Eckdrücke - Mástil/Reacciones - Tramo/Reações

S1700

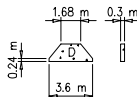
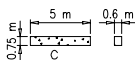
39.6 m → 50 m



Peso zavorra - Ballast weight - Poids du lest - Ballastgewicht - Peso de lastre



H	n*	Tot.
0-35 m	2C+ 18D	60800 kg
36-45 m	2C+ 22D	72000 kg
46-58 m	2C+ 32D	105000 kg



Curve di carico – Courbes de charges – Load diagrams – LastKurven – Curvas de cargas

Pmax 3000 kg

	14400 kg	52 m	2	22	24	26	28	30	32	34	36	38	40	42	44	46	48	52	m
			3000	3000	2790	2550	2350	2180	2020	1890	1770	1660	1570	1480	1400	1330	1260	1000	kg
	14400 kg	50 m	2	22	24	26	28	30	32	34	36	38	40	42	44	46	48	50	m
			3000	3000	2790	2550	2350	2180	2020	1890	1770	1660	1570	1480	1400	1330	1260	1200	kg
	14400 kg	48 m	2	2	26	28	30	32	34	36	38	40	42	44	46	48	m		
			3000	3000	2760	2560	2380	2230	2090	1960	1850	1750	1660	1580	1500	kg			
	14400 kg	45 m	2	2	26	28	30	32	34	36	38	40	42	44	45	m			
			3000	3000	2730	2530	2360	2200	2070	1940	1830	1730	1640	1600	kg				
	12000 kg	42 m	2	2	26	28	30	32	34	36	38	40	42	m					
			3000	3000	2830	2630	2450	2290	2190	2020	1900	1800	kg						
	9600 kg	39.6 m	2	2	27	28	30	32	34	36	38	39.6	m						
			3000	3000	3000	2890	2680	2500	2330	2190	2060	2000	kg						

Pmax 6000/3000 kg

	14400 kg	52 m	2	13	16	18	20	22	24	26	28	30	32	34	36	38	40	42	44	46	48	52	m
			6000	6000	4310	3810	3400	3000	2790	2550	2350	2180	2020	1890	1770	1660	1570	1480	1400	1330	1260	1000	kg
	14400 kg	50 m	2	13	16	18	20	22	24	26	28	30	32	34	36	38	40	42	44	46	48	50	m
			6000	6000	4310	3810	3400	3000	2790	2550	2350	2180	2020	1890	1770	1660	1570	1480	1400	1330	1260	1200	kg
	14400 kg	48 m	2	15	16	18	20	22	24	26	28	30	32	34	36	38	40	42	44	46	48	m	
			6000	6000	5300	4440	3970	3590	3260	2960	2760	2560	2380	2230	2090	1960	1850	1750	1660	1580	1500	kg	
	14400 kg	45 m	2	15	16	18	20	22	24	26	28	30	32	34	36	38	40	42	44	45	m		
			6000	6000	5200	4400	3930	3550	3230	3000	2730	2530	2360	2200	2070	1940	1830	1730	1640	1600	kg		
	12000 kg	42 m	2	15	16	18	20	22	24	26	28	30	32	34	36	38	40	42	m				
			6000	6000	5400	4550	4070	3680	3360	3000	2830	2630	2450	2290	2190	2020	1900	1800	kg				
	9600 kg	39.6 m	2	15	16	18	20	22	24	26	28	30	32	34	36	38	39.6	m					
			6000	6000	5300	4640	4150	3750	3420	3130	2890	2680	2500	2330	2190	2060	2000	kg					

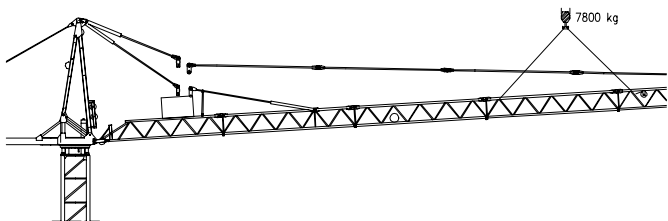
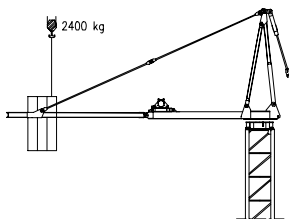
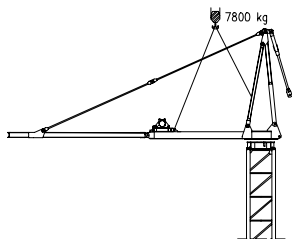
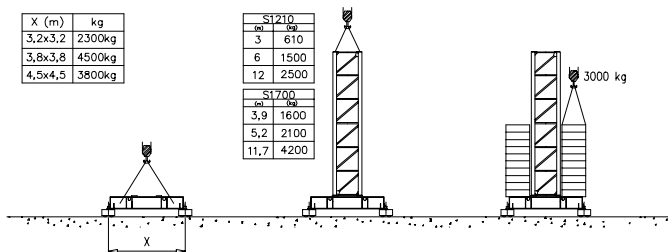
Pmax 6000 kg

	14400 kg	52 m	2	13	16	18	20	22	24	26	28	30	32	34	36	38	40	42	44	46	48	52	m
			6000	6000	4310	3810	3400	3000	2790	2550	2350	2180	2020	1890	1770	1660	1570	1480	1400	1330	1260	1000	kg
	14400 kg	50 m	2	13	16	18	20	22	24	26	28	30	32	34	36	38	40	42	44	46	48	50	m
			6000	6000	4310	3810	3400	3000	2790	2550	2350	2180	2020	1890	1770	1660	1570	1480	1400	1330	1260	1200	kg
	14400 kg	48 m	2	15	16	18	20	22	24	26	28	30	32	34	36	38	40	42	44	46	48	m	
			6000	6000	5300	4440	3970	3590	3260	3000	2760	2560	2380	2230	2090	1960	1850	1750	1660	1580	1500	kg	
	14400 kg	45 m	2	15	16	18	20	22	24	26	28	30	32	34	36	38	40	42	44	45	m		
			6000	6000	5200	4400	3930	3550	3230	3000	2730	2530	2360	2200	2070	1940	1830	1730	1640	1600	kg		
	12000 kg	42 m	2	15	16	18	20	22	24	26	28	30	32	34	36	38	40	42	m				
			6000	6000	5400	4550	4070	3680	3360	3000	2830	2630	2450	2290	2190	2020	1900	1800	kg				
	9600 kg	39.6 m	2	15	16	18	20	22	24	26	28	30	32	34	36	38	39.6	m					
			6000	6000	5300	4640	4150	3750	3420	3130	2890	2680	2500	2330	2190	2060	2000	kg					

X (m)	kg
3,2x3,2	2300kg
3,8x3,8	4500kg
4,5x4,5	3800kg

S1210	
tel.	kg
3	610
6	1500
12	2500

S1700	
tel.	kg
3,9	1600
5,2	2100
11,7	4200



Meccanismi – Mechanisms – Mécanismes – Antriebe – Mecanismos

Sollevamento S20.40 e V20.40 Hoisting Levage Heben Elevación Elevação		1a	4 m/min	3000 kg	14.7 kW	S20.40 32 kVA V20.40 28 kVA
		2a	20 m/min	3000 kg		
		3a	40 m/min	1500 kg		
		1a	2 m/min	6000 kg		
		2a	10 m/min	6000 kg		
		3a	20 m/min	3000 kg		
Sollevamento S2560 e V25.60 Hoisting Levage Heben Elevación Elevação		1a	7 m/min	3000 kg	18.5 kW	S25.60 38kVA V25.60 33 kVA
		2a	28 m/min	3000 kg		
		3a	56 m/min	1500 kg		
		1a	3.5 m/min	6000 kg		
		2a	14 m/min	6000 kg		
		3a	28 m/min	3000 kg		
Sollevamento V45.60 Hoisting Levage Heben Elevación Elevação		1a	2 m/min	6000 kg	33 kW	V45.60 50 kVA
		2a	20 m/min	6000 kg		
		3a	31 m/min	5000 kg		
		4a	46 m/min	3200 kg		
		5a	60 m/min	2500 kg		
Carrello Trrolleying Distribution Katzfahren Distribución Distribuição		1a	OP 5 m/min	6000 kg	3 kW	Potencia electrica necesaria Puissance électrique nécessaire Necessary electric power Anschlusswert
		2a	25 m/min	6000 kg		
		3a	50 m/min	3000 kg		
Rotazione Siewing Orientation Schwenken Orientación Rotação		1a	0 → 0.2	giri/min tr/min rp/min	4.4 kW @ 1200rpm n° 2 x 2.2 kW	
		2a	0 → 0.6			
		3a	0 → 0.9			
Traslazione Travelling Translation Kranfahren Traslación Translação		1a	OP 0 → 5		3.7 kW	
		2a	0 → 20			

Rete elettrica – Réseau – Mains supply – Netzstrom – Red – Rede electrica

400V – 50 Hz

